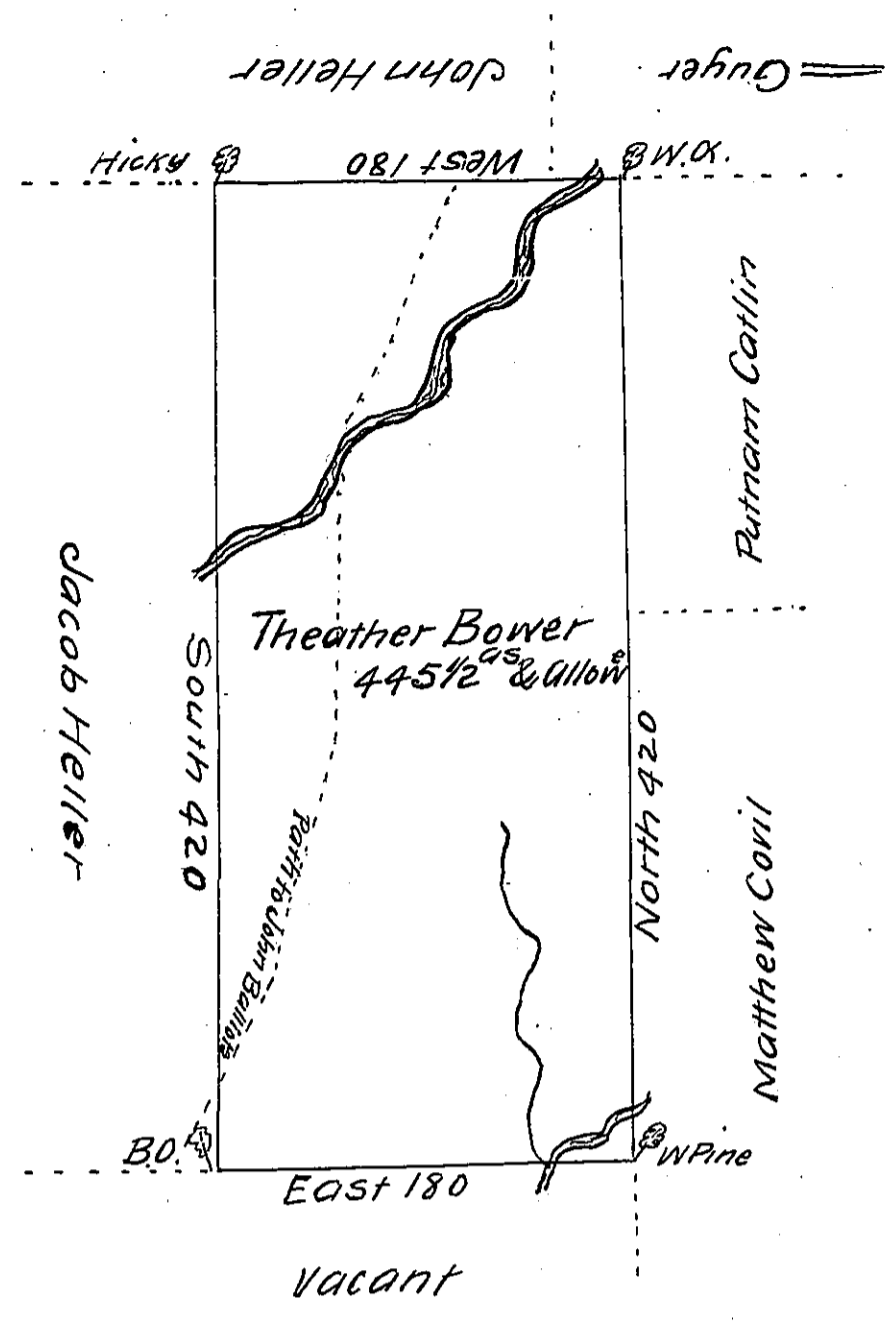


FORM NO. 1.



A Draft of a tract of Land called _____ situate on both sides Little Wappalopen Creek where John Balliots ^{Path} crosses the said Creek to Wilkes Barre in the County of Luzerne containing Four hundred & forty five acres 1/2 & allowance. Surveyed for Teather Bower the 12th day of December 1792 in pursuance of a warrant dated the 2^d day of May 1792 To Daniel Brodhead Esq^r } by W^m Gray D.S. Surv^r Gen^l }

IN TESTIMONY that the above is a copy of the original remaining on file in the Department of Internal Affairs of Pennsylvania, made conformably to an Act of Assembly approved the 16th day of February, 1833, I have hereunto set my Hand and caused the Seal of said Department to be affixed at Harrisburg, this nineteenth day of September 1911

Henry Fowler
Secretary of Internal Affairs.